

WATER/ AND WASTE WATER TECHNOLOGY

Valves ■ Actuators ■ Automation Technology



The valve people







PROVEN FOR GENERATIONS

SHUT-OFF AND CONTROL VALVES MADE BY EBRO IN THE WATER AND WASTE WATER TECHNOLOGY

Applications in the water and wastewater technology require high demands on the components installed in the system. On the one hand, the careful handling of sensitive media -such as drinking water- is of primary importance. On the other hand, aggressive and abrasive media with solids -such as waste water and

sewage sludge- place highest demands on the abrasion resistance of materials used.

EBRO offers a wide range of valves and actuators for almost all applications, which are unconditionally designed for their respective application. All valves are available for drinking water and gas sup-

ply systems and comply with DVGW guidelines.

We offer the perfect solution for your application.



Z011-A

Soft-seated shut-off and control butterfly valves for installation between flanges according to EN1092, with DVGW approval for use in water systems.

Nominal diameter:	DN 20 - DN 1200
Temperature range:	-40°C up to +200°C (depending on pressure, medium and material)
Operating pressure:	max. 16 bar

Z 011-A
Suitable butterfly valve for use in drinking water applications



Z014-A

This series of valves with tapped holes enables the one-sided flanging of drinking water supply lines. It can also be used as an end-of-line valve.

Nominal diameter:	DN 20 - DN 600
Temperature range:	-40°C up to +200°C (depending on pressure, medium and material)
Operating pressure:	max. 16 bar

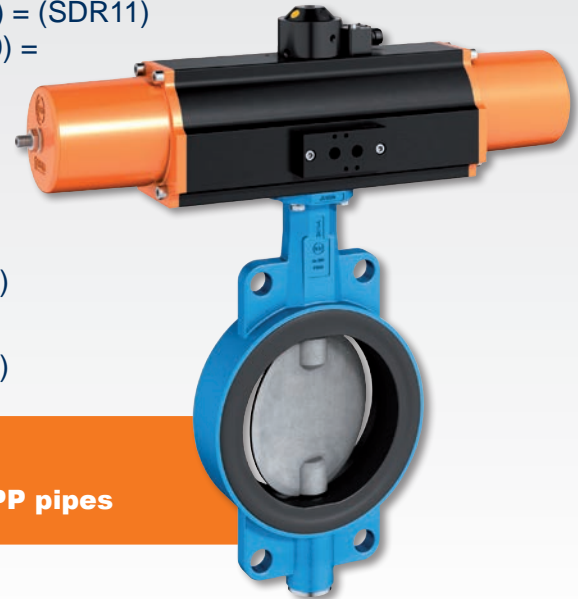
Z 014-A
Perfect solution for one-sided flange mounting



Z411-A

This type of butterfly valve fits perfectly for plastic pipelines and has a disc design for the reduced inner diameter. This construction prevents the disc from touching the pipe wall in the flange.

Nominal diameter:	da50 (DN 40) - da630 (DN600) = (SDR11) da50 (DN 40) - da500 (DN 500) = (SDR17 / SDR17,6 / SDR33)
Temperature range:	-10°C up to +160°C (depending on pressure, medium and material)
Operating pressure:	max. 10 bar SDR11,0 (PE-80) max. 10 bar SDR17,0 (PE-100) max. 6 bar SDR17,6 (PE-80) max. 5 bar SDR33,0 (PE-100)



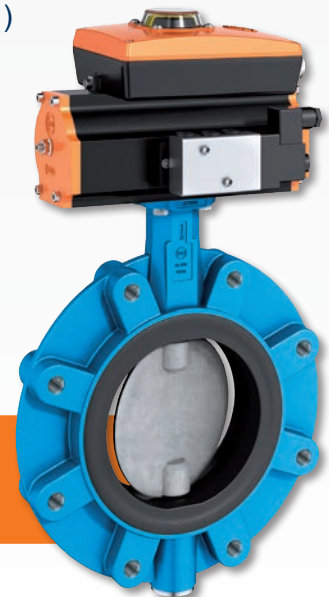
Z 411-A

The perfect valve for PE and PP pipes

Z414-A

This type of butterfly valve fits perfectly for plastic pipelines and has a disc design for the reduced inner diameter. Due to the tapped holes, this valve can also be used as an end fitting.

Nominal diameter:	da50 (DN 40) - da630 (DN600) = (SDR11) da50 (DN 40) - da500 (DN 500) = (SDR17 / SDR17,6 / SDR33)
Temperature range:	-10°C up to +160°C (depending on pressure, medium and material)
Operating pressure:	max. 10 bar SDR11,0 (PE-80) max. 10 bar SDR17,0 (PE-100) max. 6 bar SDR17,6 (PE-80) max. 5 bar SDR33,0 (PE-100)



Z 414-A

For one-sided flange-mounting in PE and PP pipes

F012-A

Soft sealing double flanged butterfly valve with centrally mounted disc. The robust body and the vulcanised-in liner are suitable for heavy-duty applications in cooling process water circuits and seawater desalination.

Nominal diameter:	DN 50 - DN 1200
Temperature range:	-40°C up to +200°C (depending on pressure, medium and material)
Operating pressure:	max. 25 bar

F 012-A
Double flanged body design for one - sided flange mounting



F012-K1

Double flange butterfly valve in centric design with short body length K1 and DVGW approval for use in drinking water supply lines.

Nominal diameter:	DN 150 - DN 2000
Temperature range:	-40°C up to +200°C (depending on pressure, medium and material)
Operating pressure:	max. 16 bar

F 012-K1
Heavy-duty double flanged butterfly valve in short body construction length



Z 011-A Gas

Due to the DVGW approval, this shut-off valve is suitable for installations between flanges in gas supply lines.

Nominal diameter:	DN 20 - DN 1200
Temperature range:	-40°C up to +200 °C (depending on pressure, medium and material)
Operating pressure:	max. 16 bar

Z 011-A
Suitable wafer type butterfly valve for use in gas applications



Z 014-A Gas

This series of valves with tapped holes makes one-sided flanging of gas supply lines possible. It can also be used as an end fitting.

Nominal diameter:	DN 20 - DN 600
Temperature range:	-40°C up to + 200°C (depending on pressure, medium and material)
Operating pressure:	max. 16 bar

Z 014-A
The perfect solution for one-sided flange mounting



F 012-A Gas

Double flanged butterfly valve in centric design with vulcanizelined-in liner. DVGW approval for use in gas pipelines.

Nominal diameter:	DN 50 - DN 1200
Temperature range:	-40°C up to +200°C (depending on pressure, medium and material)
Operating pressure:	max. 25 bar

F 012-A
Double flanged butterfly valve for one-sided flange mounting



WB 11

Knife gate valve for clamping between flanges for process and waste water plants with a solid content up to 5%.

Nominal diameter:	DN 50 - DN 1600
Temperature range:	-10°C up to + 120°C (depending on pressure, medium and material)
Operating pressure:	max. 10 bar (depends on nominal diameter)

WB 11
**Knife gate valves for use in
waste water systems**



WB 14

This series of valves with tapped holes enables one-sided flanging of sewage water pipes at full operating pressure.

Nominal diameter:	DN 50 - DN 600
Temperature range:	-10°C up to + 120°C (depending on pressure, medium and material)
Operating pressure:	max. 10 bar (depends on nominal diameter)

WB 14
**The solution for one-sided flange mounting
under full working pressure**



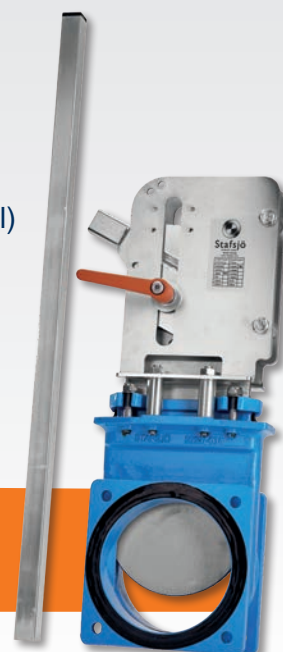
WB 12

Bi-directional sealing, square flanges with extended face-to-face and integrated flange gaskets makes it very easy to install and to replace other bonnet type valves. The valve flanges also enable end-of-pipe installations.

Nominal diameter:	DN 150 - DN 200
Temperature range:	Up to +120°C (depending on pressure, medium and material)
Operating pressure:	max. 4 bar

WB 12

Knife gate valves for slurry and fluids with suspended solids



MV

Single-sided sealing knife gate valve for clamping between flanges in sewage pipes with a solid content up to 5%. Also available with diaphragm for throttling.

Nominal diameter:	DN 50 - DN 1600
Temperature range:	Up to +425°C (depending on pressure, medium and material)
Operating pressure:	max. 16 bar (depends on nominal diameter)

MV

Economical knife gate valve for use in waste water plants



F012-DE

The robust and safe double flanged butterfly valve with double eccentrically mounted disc. Available with EKB or enamel coating with DVGW approval. The shut-off valve is also suitable for underground installation.

Nominal diameter:	DN 150 - DN 1400
Temperature range:	-20°C up to +50°C (depending on pressure, medium and material)
Operating pressure:	max. 16 bar

F 012-DE

The solution for water supply systems and transport pipelines



KFS / KOS

Soft-sealing gate valve with EKB or enamel coating for use in drinking water supply lines. Available in lengths GR 14 and GR 15, also suitable for use in the underground installations.

Nominal diameter:	DN 40 - DN 400
Temperature range:	-20°C up to +50°C (depending on pressure, medium and material)
Operating pressure:	max. 16 bar

KFS / KOS Wedge gate valve or wedge shaped gate with DVGW approval also for underground installation



RV

Non-return damper valve RV with internal shaft and rubber-coated disc, optional available with: Drain screw / lifting device / sensor installation / closing spring for vertical installation

Nominal diameter:	DN 80 - DN 300
Temperature range:	-20°C up to +50°C, (depending on pressure, medium and material)
Operating pressure:	max. 16 bar

RV

The economic non-return valve with full passage



RSK

Check valves in intermediate flange design with one piece connecting element or as a double wing check valve - metal or elastic sealant. Minor pressure loss and low opening pressure. The installation takes place between flanges pursuant to DIN / ANSI in horizontal or vertical piping systems.

Nominal diameter:	DN 32 - DN 1000
Temperature range:	-196°C up to +400°C, (depending on pressure, medium and material)
Operating pressure:	max. 8 bar plastic version max. 16 bar metallic version

RSK

Can be used in all applications.

Made of plastic or metal

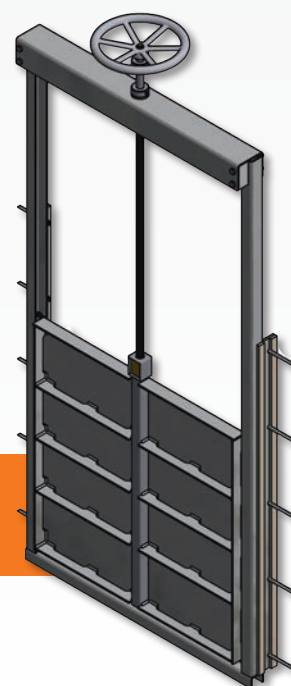


PENSTOCKS

As a welded construction in compact design, threaded gate valves, channel gate valves and drop gate valves are three- or four-side sealing shut-off valves, which differ according to their hydrostatic loads and dimensions. They are installed in front of wall openings or in ducts with composite resin anchors or grouting mortar. Suitable for use in both flow directions.

Nominal diameter:	DN 100 - DN 2000 (other diameters on request)
--------------------------	--

Penstocks for channels, tanks and pipeline inlets acc. to DIN 19569-4





ABOUT US

EBRO ARMATUREN, headquartered in Hagen, Germany, is one of the world's leading manufacturers of industrial valves, actuators and automation technology. With our international network of production plants, subsidiaries and representatives we are always close to the customer. Excellent expertise combined with high-quality products makes us an internationally acknowledged partner of the machine and plant engineering sector.

As an owner-managed family business we stand for quick decision-making, high individual responsibility, continuity and sustainable investments in research and development. We offer customized solutions for almost every individual application.

EBRO ARMATUREN **Gebr. Bröer GmbH**

Karlstr. 8
D-58135 Hagen

Telefon +49 (0)2331 / 904 – 0
Telefax +49 (0)2331 / 904 – 111

A company of the Bröer Group

www.ebro-armaturen.com

post@ebro-armaturen.com

The valve people

